



SOUTHERN AFRICAN CENTRE FOR INFECTIOUS  
DISEASE SURVEILLANCE



# Inter-sectoral and Inter-network Collaboration for Improving Disease Surveillance in East and Southern Africa

*Esron D. KARIMURIBO*

# Why to collaborate

- Evidence of sharing pathogens (human and animals)
- The majority of emerging & re-emerging infectious diseases of humans have animal origin (>75%)
- Movement of humans and animals does NOT respect borders; it is NATURAL; More so in AFRICA
- Who is Self-Sufficient (Sector Vs Network)???

∴ Need of F4P solution

# Our Experience in SACIDS

## Ngorongoro (Tz)-Narok (Ke) border



Tanzanian?-Kenyan? Animals grazing on 'no man's land'

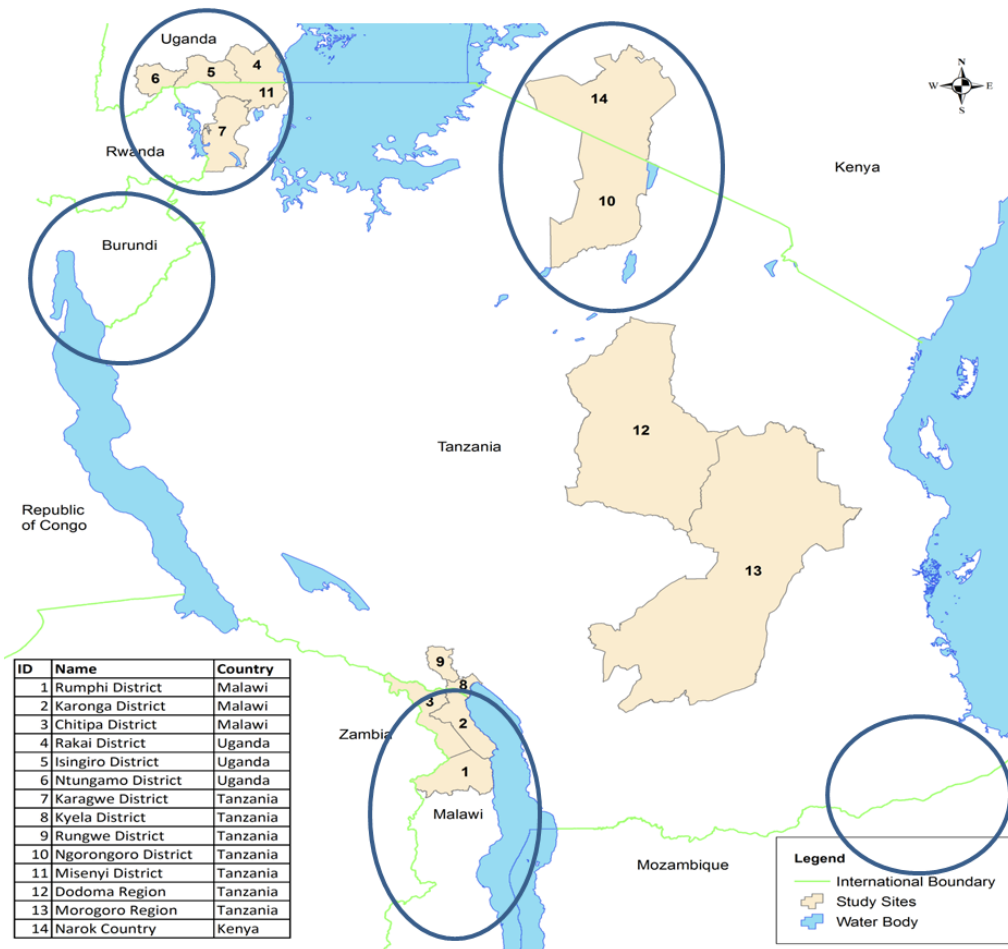


A beacon- demarcating the border



# Past Experience provides clues on Risk

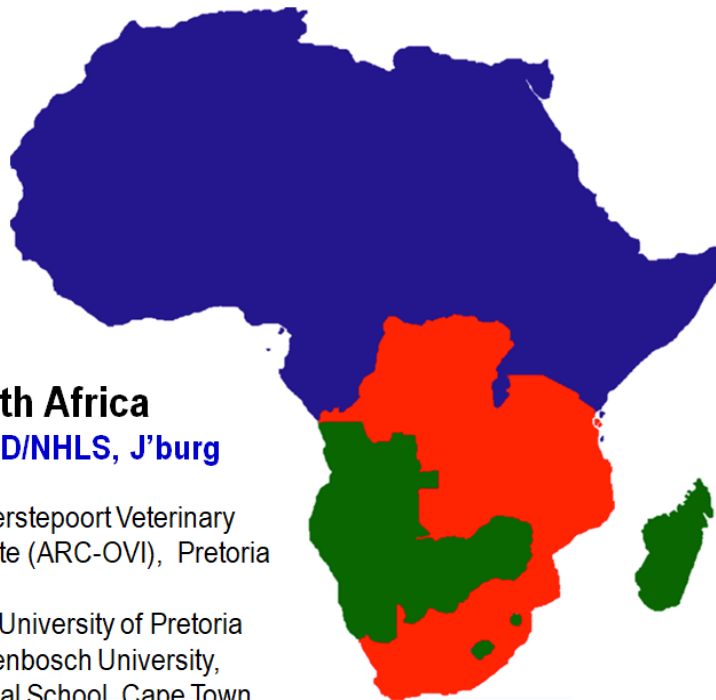
## High risk cross-border ecosystems





# SACIDS Membership

## SACIDS FOCUS IS AFRICA: *Founding institutions*



### South Africa

- **NICD/NHLS, J'burg**
- Onderstepoort Veterinary Institute (ARC-OVI), Pretoria
- FVS University of Pretoria
- Stellenbosch University, Medical School, Cape Town



**Sokoine University of  
Agriculture peer elected as  
the LEAD Institution**

### Democratic Republic of Congo

- Institute of Public Health, Faculty of Medicine Univ of Kinshasa
- The Faculty of Veterinary Medicine of the University of Lubumbashi
- National Institute for Biomedical Research (INRB)
- The Central Veterinary Laboratory in Kinshasa.
- National Institute for Nature Conservation (ICCN),

### Mozambique

#### • Faculty of Veterinary Medicine, Eduardo Mondlane University

- Faculty of Medicine - Eduardo Mondlane University (FM-EMU)
- National Health Institute – Ministry of Health (INS)
- Directorate of Animal Sciences – Institute of Agricultural Research of Mozambique - Ministry of Agriculture (DCA-IIAM)

### Tanzania

#### • Muhimbili University of Health and Allied Sciences

- The National Institute for Medical Research (NIMR)
- The Faculty of Veterinary Medicine, Sokoine University (FVM-SUA).
- The Central Veterinary Laboratory (CVL)
- The Tanzania Wildlife Research Institute (TAWIRI)

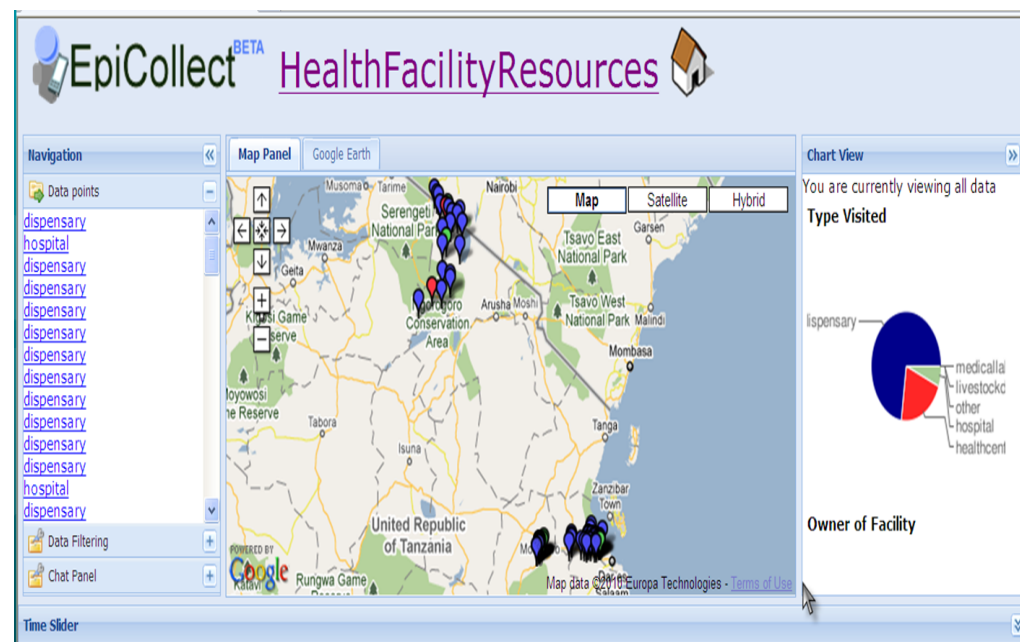
### Zambia

#### • School of Veterinary Medicine, University of Zambia

- School of Medicine - University of Zambia
- Central Veterinary Research Institute (CVRI)
- Tropical Diseases Research Institute (TDRC)

# Mapping Human and Animal Health Resources (2009-2010)

- In collaboration with Imperial college London & RVC; SACIDS used EpiCollect to map human and animal health facilities in Two districts
- Carried out in Nov 2009
- Two districts: Ngorongoro & Kibaha



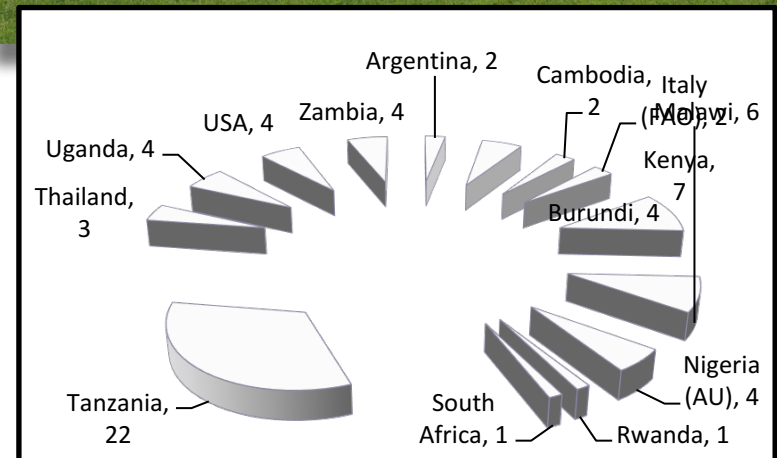
# Inventorying Existing Technologies and Resources in Africa



- Ngurdoto Meeting (Arusha, Tanzania)
- Held on 10-11 Jan, 2010
- Benchmarked technologies and expertise in EAC & SADC
- Recommendation: **Cross-border & Cross-sectoral collaboration + Use of mobile technologies**

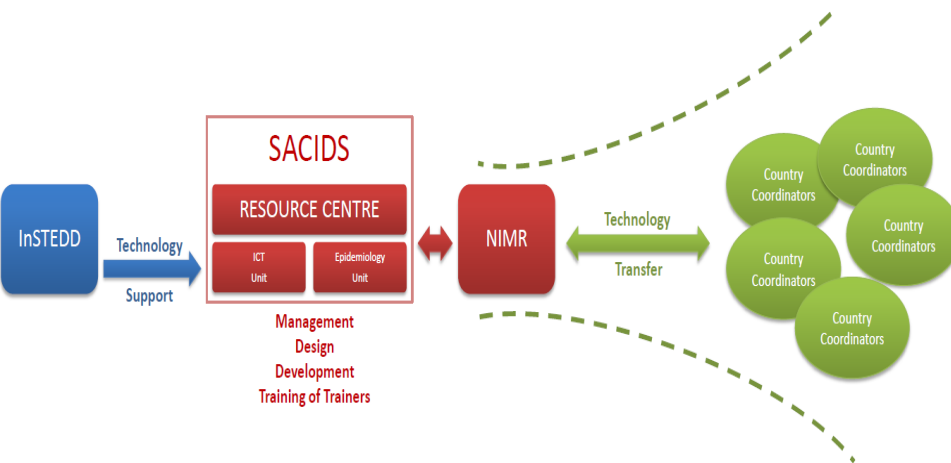
# EpiHack Tanzania 2014

- SACIDS Organized the Event on 8-12 Dec '14
- Attended by 66 participants
  - Health Officials (Public Hlth & Veterinary) Plus ICT Programmers
  - Tanzania, EAIDSnet, MBDS, Other Regional & International Organizations

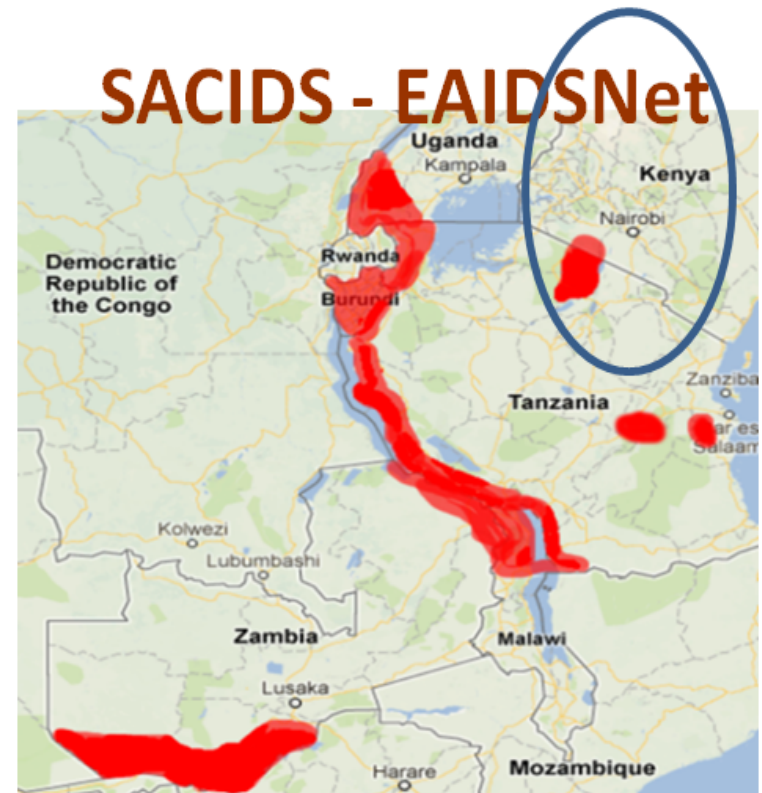




# SACIDS Role in promoting Cross-sectoral and Cross-border collaboration: EAC & SADC



**Resource Centre:**  
*AfyaData App*





# Master title style

**Ahsanteni!!**  
**Thank you!!**  
**Merci!**  
**Obrigado!!**

Working Towards One Africa, One Health  
www.sacids.org | secretariat@sacids.org | +255 732 931 717



## TechnoHealth Surveillance Newsletter



Volume 2, Number 12

December 2017

### Editorial address

TechnoHealth Surveillance  
Newsletter,  
Southern African Centre for  
Infectious Disease Surveillance,  
Sokoine University of  
Agriculture,  
P.O. Box 3297,  
Chuo Kikuu, Morogoro, Tanzania  
E-mail: [onehealthnews@sacids.org](mailto:onehealthnews@sacids.org)

### Editorial Committee

Dr. Calvin Sindato  
Prof. Esron Karimuribo  
Dr. Leonard Mboera  
Prof. Kariuki Njenga  
Dr. Chubwa Choby

### From Editors' desk

Dear reader,

We thank you for the opportunities you gave us in 2017 to share with you, through *TechnoHealth Surveillance*, our research and training activities to enhance community-based participatory One Health disease surveillance using digital technology. Thank you for all your opinions and feedback which have contributed to our improved performance. We are looking forward to a New Year 2018 filled with more opportunities to enhance community One Health security in-line with the Global Health Security Agenda.

We are delighted to have expanded the scope of community engagement in participatory community-based disease surveillance, which is described in this issue. We have continued receiving data on health events occurring in the community through Community Health Reporters (CHRs). We present in this issue the most probable diseases in human and livestock



THE WORLD BANK



## Sponsors

